



MINISTERO DELL'AGRICOLTURA
DELLA SOVRANITÀ ALIMENTARE
E DELLE FORESTE



DEPARTMENT OF CENTRAL INSPECTORATE FOR FRAUD
REPRESSION AND QUALITY PROTECTION OF THE AGRI-
FOOD PRODUCTS AND FOODSTAFFS

ICQRF

WINE CELLAR ITALY

Update of 31 May 2024

**Wines, musts, GIs stocked in Italy by operators
obliged to keep the wine computerized register**

report no. 6/2024

published at the webpage: www.politicheagricole.it



Wine cellar Italy at 31 May 2024

The Report is drawn up by the ICQRF on data recorded in the wine computerized registers, which at 31 May 2024 are 22,692. ICQRF estimates that the database contains at least 95% of wine and must held in Italy.

Wines: 46.4 million hectoliters. Compared to the past 30 April 2024, stocks are 7.1% lower (-3,544,505 hectoliters). The stocks are 12.3% lower compared to 31 May 2023 (-6,484,902 hectoliters).

1. Summary

On 31 May 2024, in Italian oenological premises, there are 46.4 million hectolitres of wine, 3.5 million hectolitres of musts and 48,441 hectolitres of new wine still in fermentation. Compared to the stocks recorded on 31 May 2023, as reported in table 7, the stocks are lower for wines (-12.3%), musts (-29.0%), and new wine still in fermentation (-13.0%). As shown in table 8, compared to the stocks recorded on 30 April 2024, stocks are lower for wine (-7.1%), for musts (-13.6%) and for new wine still in fermentation (-24.1%).

The 59.3% of wine in Italy is physically stocked in the northern regions, mainly in Veneto region.

The 56.0% of the wine in stock is PDO, 25.4% of wine is PGI, while the varietal wines stocks represent just 1.4% of the total. The remaining 17.2% consists of other wines.

The GIs stocks are highly concentrated; in fact, the first 20 of 529 registered names represent more than half of the total GI stocks (58.2%).

2. Wine stocked in Italy as of 31 May 2024

Table 1. Wine stocks in Italy by category and colour

WINES	hectolitres	%
PDO wines	25.989.188	56,0
<i>white</i>	12.031.875	25,9
<i>rosé</i>	832.696	1,8
<i>red</i>	13.124.616	28,3
PGI wines	11.798.973	25,4
<i>white</i>	4.196.421	9,0
<i>rosé</i>	477.119	1,0
<i>red</i>	7.125.433	15,4
Varietal wines	628.420	1,4
Other wines	7.986.286	17,2
ITALY	46.402.867	100,0

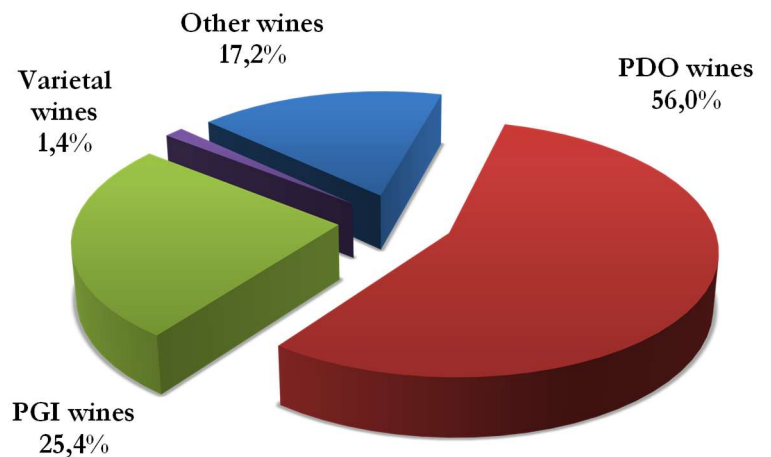
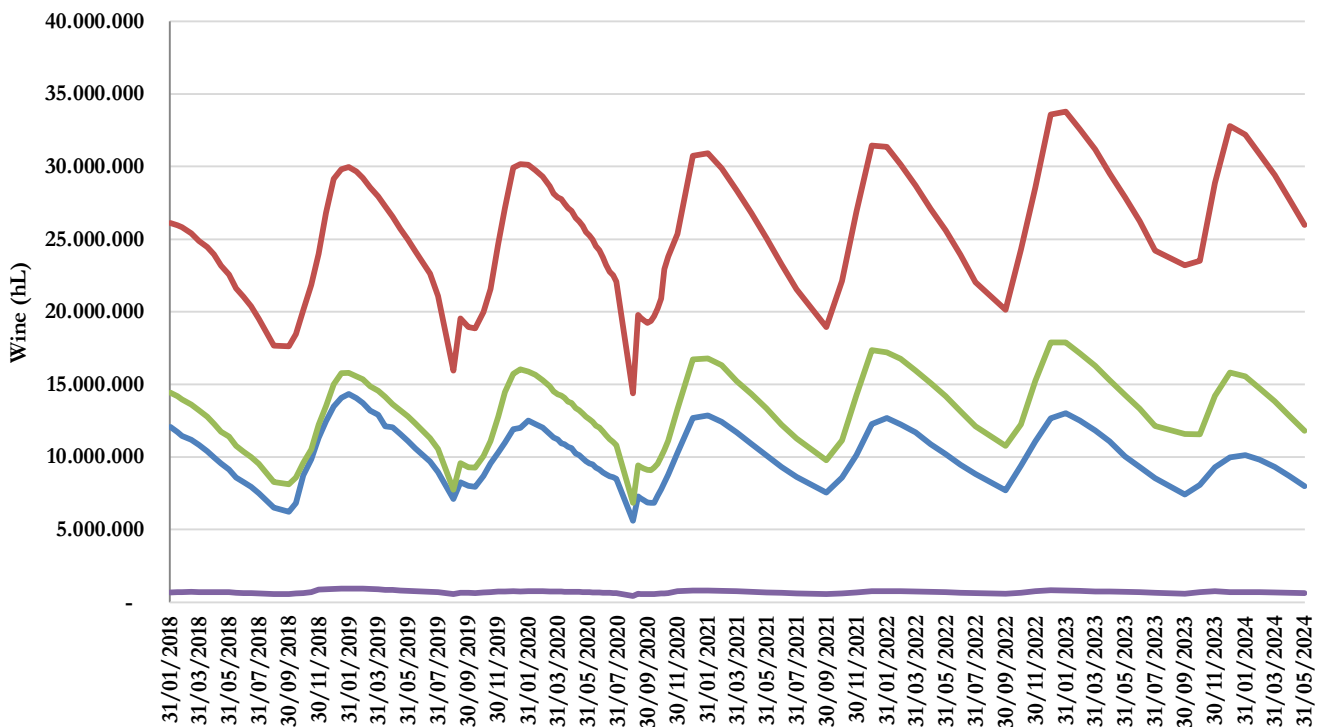


Figure 1. Trend of the wine stocks by category: 1st February 2018 – 31 May 2024



Data at 31 August of each year are influenced by the partial closure of the registrations related to the previous campaigns.

Where is physically stocked the wine in Italy?

The 59.3% of wine in Italy is stocked in the northern regions. In Veneto, there is the 26.1% of the national wine, thanks to the significant effect of stocks in the provinces of Treviso (11.0%) and Verona (9.1%).

Figure 2. Wine stocks by Region and Geographical Area

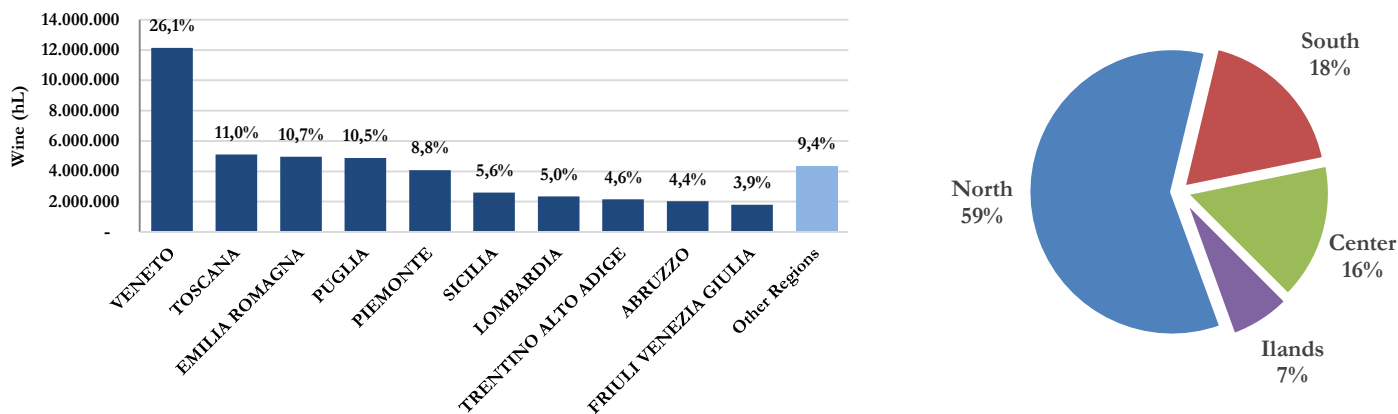


Table 2. Wine stocks by geographical area and category

Geographical area	PDO wines (hL)	PGI wines (hL)	Other wines (hL)	Varietal wines (hL)	Total_Wines (hL)
North	17.044.736	5.228.898	4.786.157	476.070	27.535.860
South	2.930.626	3.425.332	1.895.249	104.935	8.356.142
Center	4.033.413	2.262.198	953.481	36.641	7.285.733
Island	1.980.413	882.546	351.399	10.775	3.225.132
ITALY	25.989.188	11.798.973	7.986.286	628.420	46.402.867
Percentage					
Geographical area	PDO wines (%)	PGI wines (%)	Other wines (%)	Varietal wines (%)	Total_Wines (%)
North	65,6	44,3	59,9	75,8	59,3
South	11,3	29,0	23,7	16,7	18,0
Center	15,5	19,2	11,9	5,8	15,7
Island	7,6	7,5	4,4	1,7	7,0
ITALY	100,0	100,0	100,0	100,0	100,0

NB; The allocation of the Regions in the geographical areas follows the ISTAT scheme: North: Piedmont, Valle d'Aosta, Liguria, Lombardy, Trentino-Alto Adige, Veneto, Friuli - Venezia Giulia, Emilia-Romagna; Center: Tuscany, Umbria, Marche, Lazio; South: Abruzzo, Molise, Campania, Puglia, Basilicata, Calabria; Islands: Sicily, Sardinia

Table 3. Wine stocks by Region and category

Region	PDO wines (hL)	PGI wines (hL)	Other wines (hL)	Varietal wines (hL)	Total_Wines (hL)
VENETO	8.534.733	2.238.101	1.179.306	177.356	12.129.495
TOSCANA	3.161.936	1.470.948	481.956	10.099	5.124.940
EMILIA ROMAGNA	1.185.765	1.664.455	2.025.233	91.365	4.966.818
PUGLIA	1.009.948	2.650.195	1.188.199	34.271	4.882.613
PIEMONTE	3.077.456	148.723	771.965	80.734	4.078.878
SICILIA	1.567.563	752.517	255.240	8.175	2.583.494
LOMBARDIA	1.310.861	475.815	485.950	63.840	2.336.465
TRENTINO ALTO ADIGE	1.649.662	374.850	104.247	16.478	2.145.236
ABRUZZO	1.224.840	365.561	366.501	63.292	2.020.194
FRIULI VENEZIA GIULIA	1.231.744	317.930	192.613	45.644	1.787.930
CAMPANIA	512.933	282.989	245.262	4.954	1.046.137
MARCHE	463.617	252.118	152.563	11.064	879.362
LAZIO	179.385	325.963	280.888	11.886	798.122
SARDEGNA	412.850	130.029	96.159	2.600	641.637
UMBRIA	228.475	213.169	38.074	3.591	483.308
CALABRIA	55.754	69.002	42.451	607	167.814
BASILICATA	79.597	32.432	19.612	703	132.344
MOLISE	47.554	25.153	33.225	1.108	107.040
LIGURIA	31.283	9.016	20.626	619	61.543
VALLE D'AOSTA	23.233	8	6.217	35	29.493
ITALY	25.989.188	11.798.973	7.986.286	628.420	46.402.867

Figure 3. Wine stocks by Province

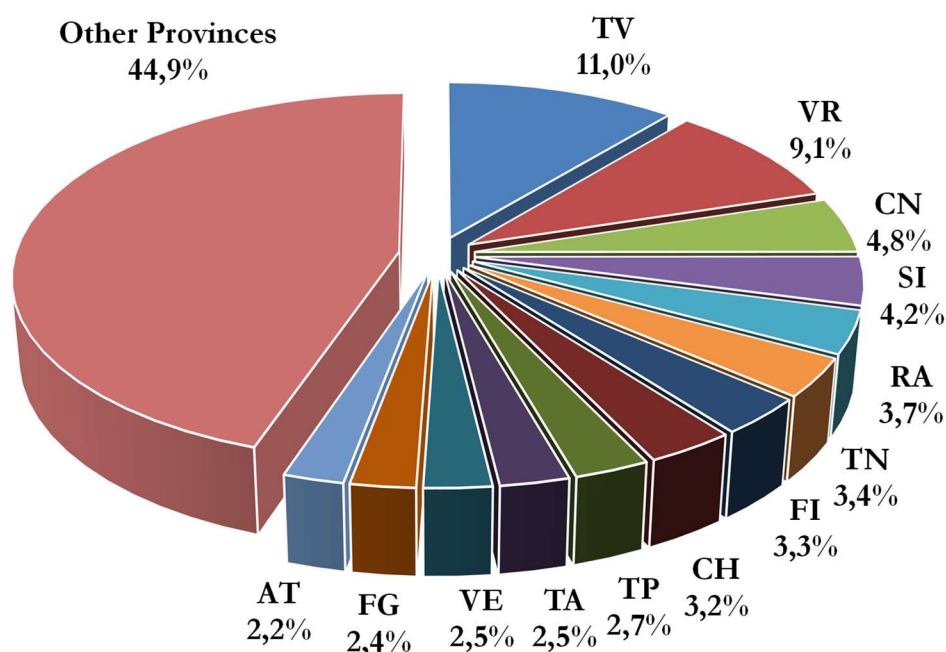


Table 4. Wine stocks by Province and category

Province	PDO wines (hL)	PGI wines (hL)	Other wines (hL)	Varietal wines (hL)	Total_Wines (hL)
Treviso	3.932.779	618.154	519.190	55.675	5.125.799
Verona	2.863.632	1.004.422	291.878	67.769	4.227.701
Cuneo	1.812.059	103.252	285.526	38.137	2.238.974
Siena	1.448.623	395.420	101.445	1.276	1.946.764
Ravenna	83.388	583.952	1.022.251	43.035	1.732.626
Trento	1.209.056	291.127	67.133	12.530	1.579.846
Firenze	895.855	401.088	215.714	1.838	1.514.494
Chieti	870.741	282.084	289.292	59.825	1.501.942
Trapani	783.904	374.336	115.635	257	1.274.132
Taranto	499.971	610.149	62.206	625	1.172.951
Venezia	812.173	230.613	96.594	6.228	1.145.607
Foggia	18.119	469.149	591.104	21.350	1.099.722
Asti	702.949	21.094	267.909	30.723	1.022.674
Bari	95.306	489.481	410.822	9.367	1.004.977
Brindisi	240.711	643.878	60.142	427	945.158
Brescia	758.670	32.462	146.687	5.804	943.623
Forlì - Cesena	238.121	322.272	350.718	14.241	925.352
Vicenza	527.050	233.673	115.755	34.222	910.701
Pavia	336.204	271.634	169.819	40.945	818.602
Udine	476.040	141.912	110.015	29.223	757.190
Reggio Emilia	167.238	328.946	242.255	6.357	744.797
Padova	396.785	148.434	153.376	13.364	711.959
Pordenone	552.528	91.360	50.715	9.089	703.692
Modena	386.922	160.879	122.294	8.293	678.389
Bolzano	440.606	83.723	37.114	3.948	565.391
<i>Other Provinces</i>	<i>5.439.756</i>	<i>3.465.478</i>	<i>2.090.696</i>	<i>113.873</i>	<i>11.109.803</i>
ITALY	25.989.188	11.798.973	7.986.286	628.420	46.402.867

Which wines in the wine cellar Italy?

The 56.0% of the wine in stock is PDO, with a prevalence of red (50.5%). 25.4% of wine is PGI, with a prevalence of red (60.4%), while the varietal wines stocks represent just 1.4% of the total. The 17.2% consists of other wines.

Despite the large number of GIs registered (529), the GIs stocks are highly concentrated; in fact, the first 20 names represent more than half of the total GI stocks (58.2%).

Table 5. PDO and PGI wines stocks in Italy

	hectolitres	%
PROSECCO	4.573.878	12,1
PUGLIA	1.778.596	4,7
TOSCANO O TOSCANA	1.383.822	3,7
SALENTO	1.296.341	3,4
SICILIA	1.213.399	3,2
DELLE VENEZIE O BENESKIH OKOLISEV	1.158.841	3,1
MONTEPULCIANO D'ABRUZZO	1.090.398	2,9
CHIANTI	1.090.256	2,9
VENETO	1.066.386	2,8
RUBICONE	980.344	2,6
TERRE SICILIANE	939.571	2,5
CHIANTI CLASSICO	736.268	1,9
CONEGLIANO VALDOBBIADENE PROSECCO	670.038	1,8
VALPOLICELLA RIPASSO	669.735	1,8
PRIMITIVO DI MANDURIA	619.173	1,6
FRANCIACORTA	612.665	1,6
EMILIA O DELL' EMILIA	566.982	1,5
PROVINCIA DI VERONA O VERONESE	549.316	1,5
BAROLO	535.127	1,4
AMARONE DELLA VALPOLICELLA	469.281	1,2
<i>Other PDO /PGI</i>	<i>15.787.743</i>	<i>41,8</i>
Total PDO /PGI	37.788.161	100,0

Figure 4. PDO/PGI wines stocks by Region

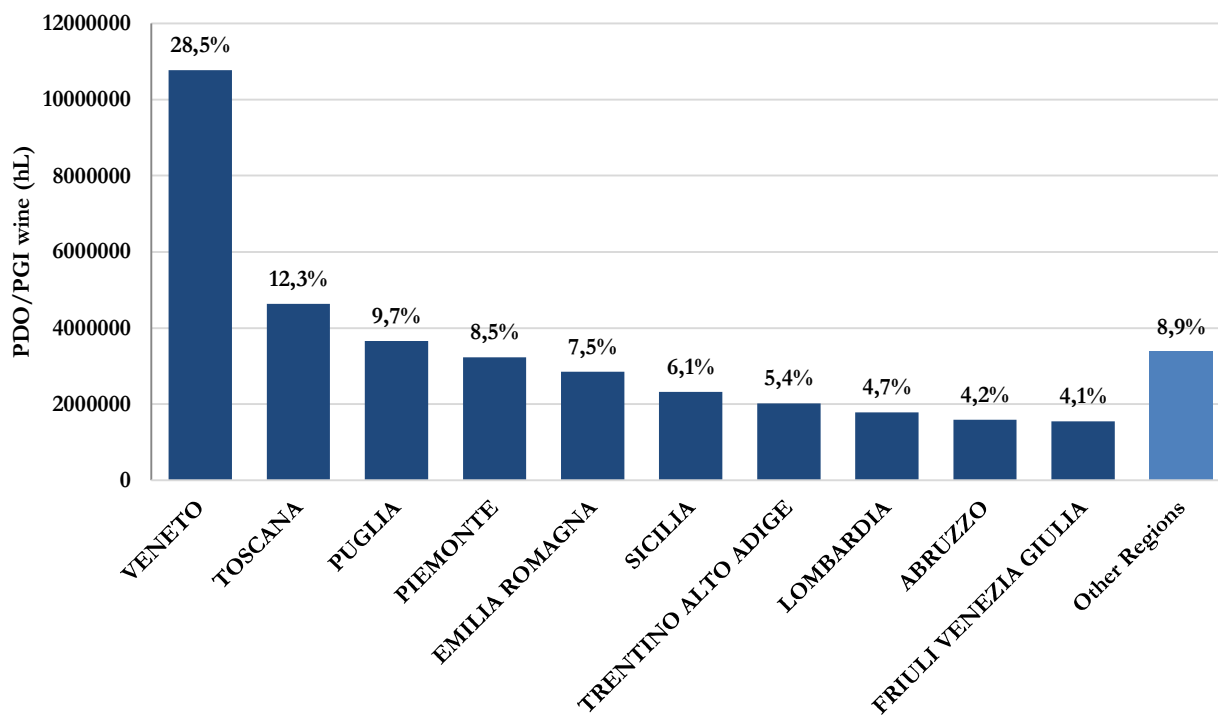
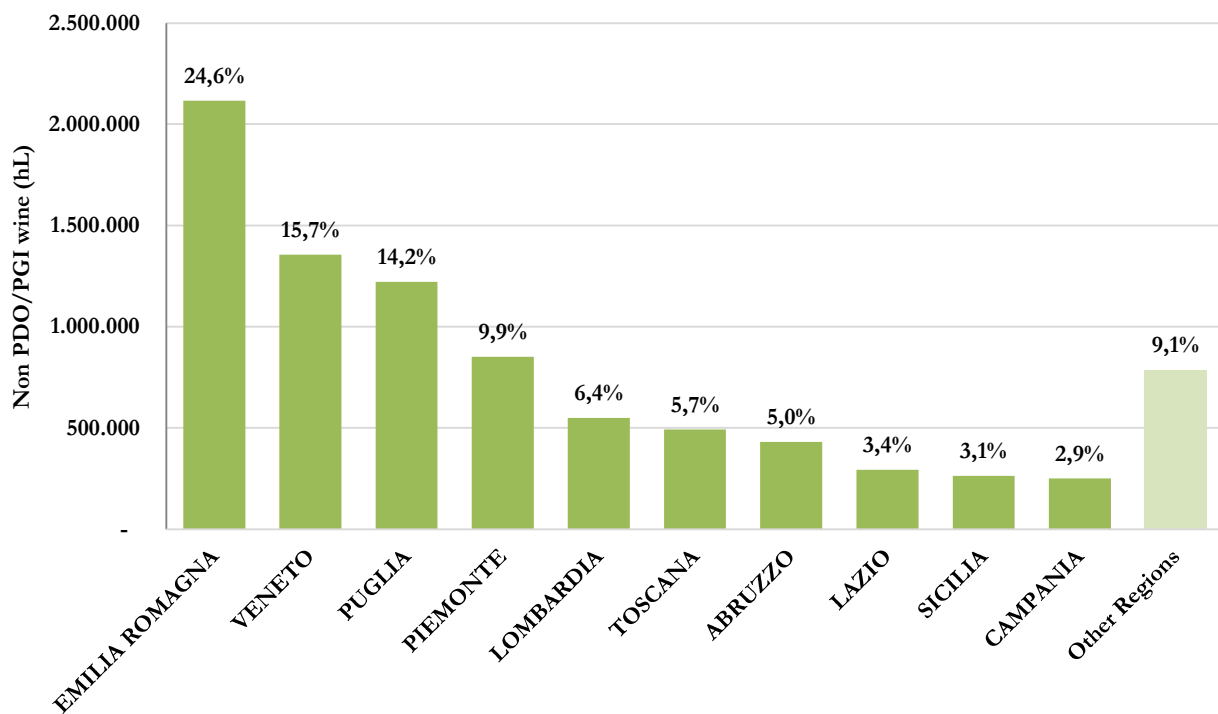


Figure 5. Other wines stocks by Region



3. MUSTS stocked in Italy as of 31 May 2024

The 3.5 million hectolitres of musts are mainly stocked in the northern (56.8%) and southern (31.8%) regions of Italy. In the top 2 Regions are stocked the 56.4% of the musts: Puglia (29.9%) and Emilia-Romagna (26.5%).

Table 6. Must stocks in Italy by category and geographical area

Musts	hectolitres	%
Must concentrated	100.142	2,9%
MCR	240.841	6,9%
Other musts	3.165.660	90,3%
ITALY	3.506.643	100%

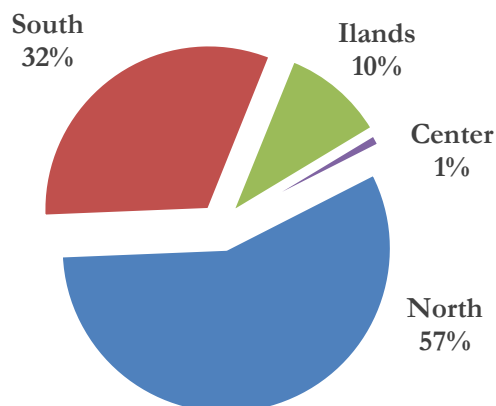
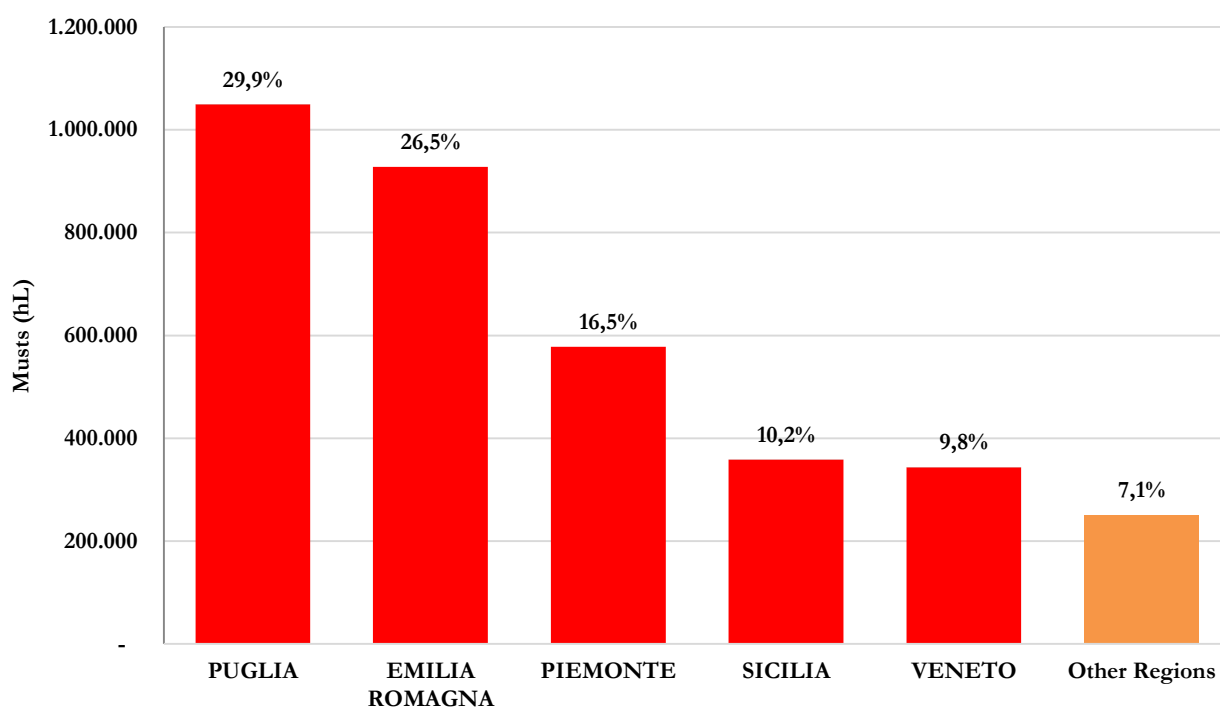


Figure 6. Musts stocks by Region



4. New Wine Still in Fermentation stocked in Italy as of 31 May 2024

The new wines still in fermentation are 48,441 hectolitres, stocked as follow: 68.9% in the North, 21.4% in the Central Regions, 6.8% in the South, and the remaining 2.9% in the Islands.

5. Stocks 31 May 2024 vs. 31 May 2023

Table 7. Difference in wine products stocks compared to the same period of the last year. Data in hectolitres

WINES	31/05/2024	31/05/2023	2024 vs 2023
PDO wines	25.989.188	27.888.799	-6,8%
<i>white</i>	12.031.875	12.861.093	-6,4%
<i>rosé</i>	832.696	835.284	-0,3%
<i>red</i>	13.124.616	14.192.422	-7,5%
PGI wines	11.798.973	14.278.332	-17,4%
<i>white</i>	4.196.421	5.021.231	-16,4%
<i>rosé</i>	477.119	546.916	-12,8%
<i>red</i>	7.125.433	8.710.184	-18,2%
Varietal wines	628.420	700.272	-10,3%
Other wines	7.986.286	10.020.366	-20,3%
ITALY	46.402.867	52.887.769	-12,3%
MUSTS			
Must concentrated	100.142	82.834	20,9%
MCR	240.841	259.632	-7,2%
Other musts	3.165.660	4.598.806	-31,2%
ITALY	3.506.643	4.941.272	-29,0%
New wine still in fermentation			
ITALY	48.441	55.693	-13,0%

6. Stocks 31 May 2024 vs. 30 April 2024

Table 8. Differences in wine products stocks compared to the last data. Data in hectolitres

WINES	31/05/2024	30/04/2024	diff.
PDO wines	25.989.188	27.757.628	-6,4%
<i>white</i>	12.031.875	13.205.017	-8,9%
<i>rosé</i>	832.696	856.925	-2,8%
<i>red</i>	13.124.616	13.695.686	-4,2%
PGI wines	11.798.973	12.851.268	-8,2%
<i>white</i>	4.196.421	4.717.397	-11,0%
<i>rosé</i>	477.119	515.350	-7,4%
<i>red</i>	7.125.433	7.618.521	-6,5%
Varietal wines	628.420	648.710	-3,1%
Other wines	7.986.286	8.689.766	-8,1%
ITALY	46.402.867	49.947.372	-7,1%
MUSTS			
	31/05/2024	30/04/2024	diff.
Must concentrated	100.142	75.758	32,2%
MCR	240.841	229.510	4,9%
Other musts	3.165.660	3.751.885	-15,6%
ITALY	3.506.643	4.057.152	-13,6%
New wine still in fermentation			
	31/05/2024	30/04/2024	diff.
ITALY	48.441	63.818	-24,1%